

THE INN @ RIVER RANCH

Lafayette, Louisiana

CLIENT: RIVER RANCH
DEVELOPMENT COMPANY

SIZE: 4 ACRES

SERVICES: MASTER PLANNING
ARCHITECTURE
LANDSCAPE

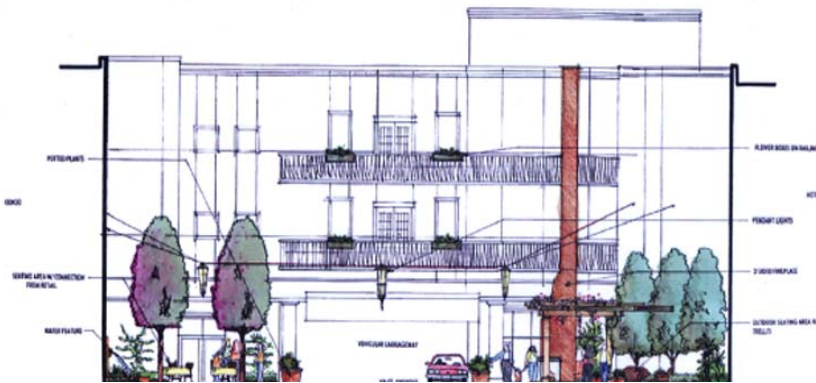
STATUS: COMPLETED



SITE PLAN
SCALE: 1"=20'

The architectural vernacular and landscape concepts reflect the intimate scale and feel of the French Quarter in New Orleans. A focal point of the development is a central motor court that serves as both an entry court and activity space reminiscent of the aforementioned French Quarter. In addition, the project included: streetscape enhancements for the two adjoining blocks, perimeter landscape enhancements for both the Inn and adjoining office building, as well as redevelopment of the DeGaulle Square.

The work described on this page was completed by David Robbins while working with RTKL Associates Inc.



SECTION B SCALE: 1/4"=1'