



# EAST LAKE STATION AREA REDEVELOPMENT

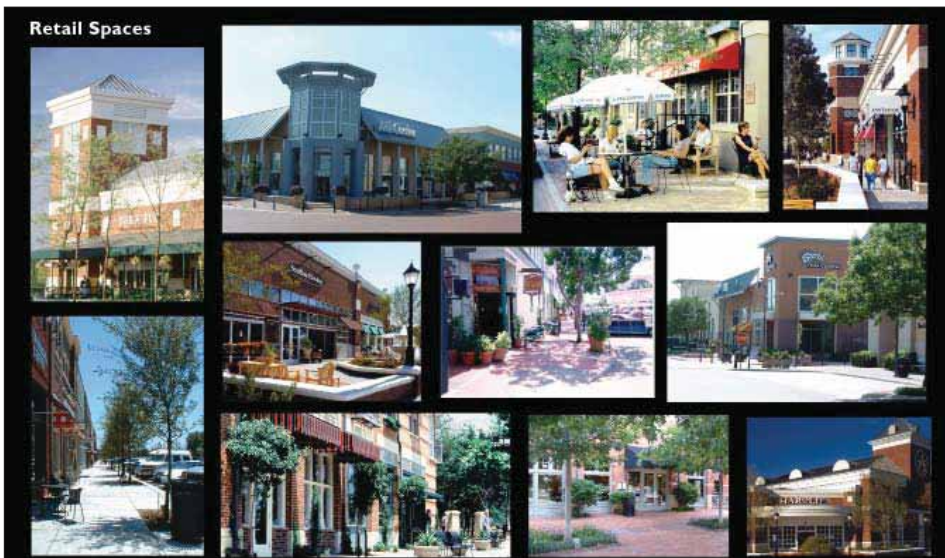
East Lake, Georgia

**CLIENT:** MCCHESENEY PARTNERS  
**SIZE:** 16 ACRES  
**SERVICES:** MASTER PLANNING  
**STATUS:** PLANNING - COMPLETE



Located at the East Lake MARTA Station, the project offers a unique opportunity for development at the center of an emerging community. The district is centered on a civic-scaled urban plaza designed to be both a local and regional draw by providing a framework for special events. The blend of public and private spaces will create a dynamic destination that will be a unique live, work, and play environment.

The development program has been divided into two sections - north and south. The southern portion will constitute the initial phase with the northern piece reserved for future development. Phase One includes: 60,000 square feet of retail, 160 residential units (including live / work units), and a 430 space parking deck to accommodate both public and private uses. Phase Two development includes: 10,000 square feet of retail, 150 residential units (including live / work units), and a 440 space parking deck to primarily accommodate station parking.



The work described on this page was completed by David Robbins while working with RTKL Associates Inc.